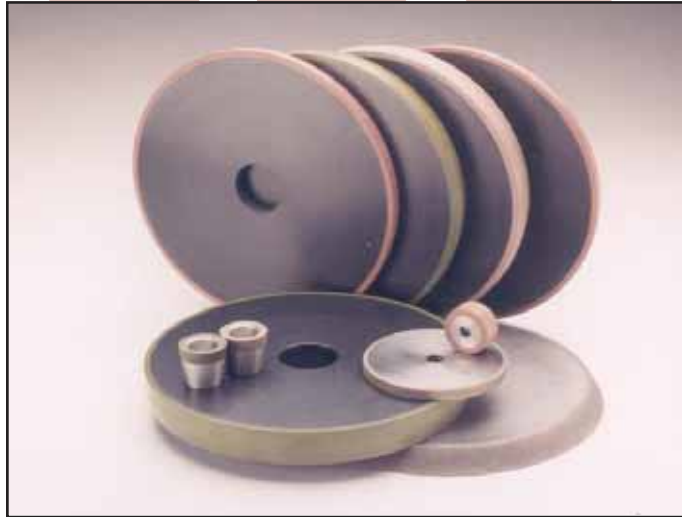


BONDED GRINDING WHEELS

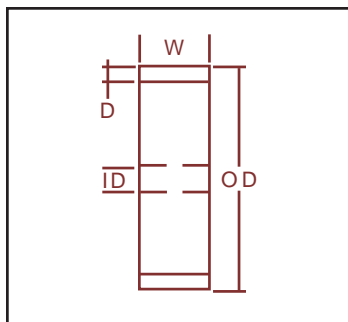
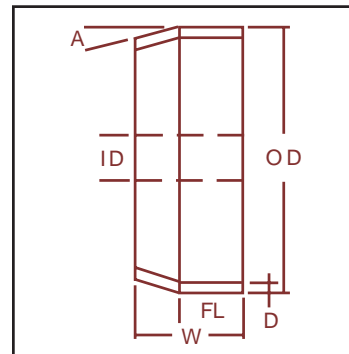
Die Quip's line of bonded grinding wheels feature two types of bonds, resin and copper, to meet your specific grinding needs. The resin bond is a softer and more open bond that is best used for heavier material removal in coarser grits. While the copper bond is specifically designed to replace hand finishing with diamond compound. This hard bond provides a mirror finish when used in grit sizes finer than 800.



Plug Grinding Wheels

Die Quip's floating plug grinding wheels are precisely molded and trued on a Bakalite core. They are available in resin and copper bonds to fit the application and in grit sizes from 80-3000. These wheels can be made in any configuration with the following information.

Description	Code
Outside Diameter	OD
Inside Diameter	ID
Plug Angle	A
Length of Flat	FL
Total Width of Wheel	W
Depth of Diamond Bond	D
Diamond Concentration	50-100%
Bond Type	C-Copper R-Resin



1A1 Straight Grinding Wheels

Our 1A1 wheels are precisely molded and trued on a Bakalite core or solid bond. They are available in resin and copper bonds to fit the application and in grit sizes from 80-3000. These wheels can be made in any configuration with the following information.

Description	Code
Outside Diameter	OD
Inside Diameter	ID
Total Width of Wheel	W
Depth of Diamond Bond	D
Diamond Concentration	50-100%
Bond Type	C-Copper R-Resin M-Carbide

DIE QUIP CORP.

5360 Enterprise Blvd.
Bethel Park, PA 15102 USA
412/833-1662
412/835-6474 FAX
www.DIEQUIP.com
email - DIEQUIP@DIEQUIP.com