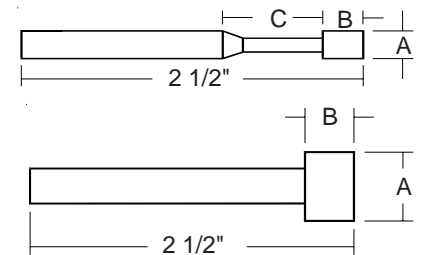


# DQ SERIES CYLINDRICAL PLATED PINS

Die Quip's DQ series of electroplated grinding pins feature 1/8" hardened steel shanks and diamond or CBN abrasives. These precision grinding pins are ideal for use in internal or jig grinding applications where tool rigidity is critical to control diameter tolerances and tool life. Through our special electroplating process, abrasive exposure is maximized for an open cutting action that greatly reduces heat and wear.



## 1/8" Shank Pins



## STANDARD ELECTROPLATED PINS\*

Description	Part No.	Diamond	A	B	C	Description	Part No.	Diamond	A	B	C
<i>1/8" Shank Pin</i>											
DQ 40	94204100	100/120(D151)	.040	1/8	1/4	DQ 110L	94211101	100/120(D151)	.110	5/32	27/32
	94404100	200/230(D76)					94411101	200/230(D76)			
DQ 50	94204100	100/120(D151)	.050	1/8	1/4	DQ 125	94212100	100/120(D151)	1/8	5/32	11/32
	94404100	200/230(D76)					94412100	200/230(D76)			
DQ 60	94205100	100/120(D151)	.060	1/8	1/4	DQ 125L	94212101	100/120(D151)	1/8	5/32	27/32
	94405100	200/230(D76)					94412101	200/230(D76)			
DQ 70	94207100	100/120(D151)	.070	5/32	11/32	DQ 141	94214100	100/120(D151)	9/64	1/4	-
	94407100	200/230(D76)					94414100	200/230(D76)			
DQ 70L	94207101	100/120(D151)	.070	5/32	27/32	DQ 156	94215100	100/120(D151)	5/32	1/4	-
	94407101	200/230(D76)					94415100	200/230(D76)			
DQ 80	94208100	100/120(D151)	.080	5/32	11/32	DQ 188	94218100	100/120(D151)	3/16	1/4	-
	94408100	200/230(D76)					94418100	200/230(D76)			
DQ 80L	94208101	100/120(D151)	.080	5/32	27/32	DQ 218	94221100	100/120(D151)	7/32	1/4	-
	94408101	200/230(D76)					94421100	200/230(D76)			
DQ 90	94209100	100/120(D151)	.090	5/32	11/32	DQ 250	94225100	100/120(D151)	1/4	1/4	-
	94409100	200/230(D76)					94425100	200/230(D76)			
DQ 90L	94209101	100/120(D151)	.090	5/32	27/32						
	94409101	200/230(D76)									
DQ 100	94210100	100/120(D151)	.100	5/32	11/32						
	94410100	200/230(D76)									
DQ 100L	94210101	100/120(D151)	.100	5/32	27/32						
	94410101	200/230(D76)									
DQ 110	94211100	100/120(D151)	.110	5/32	11/32						
	94411100	200/230(D76)									

**DIE QUIP CORP.**

5360 Enterprise Blvd.  
Bethel Park, PA 15102 USA  
412/833-1662  
412/835-6474 FAX  
[www.DIEQUIP.com](http://www.DIEQUIP.com)  
email - [DIEQUIP@DIEQUIP.com](mailto:DIEQUIP@DIEQUIP.com)

\* Custom sizes, grits and CBN abrasives are available by request.