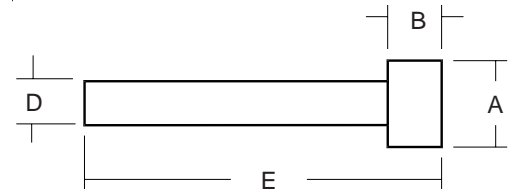
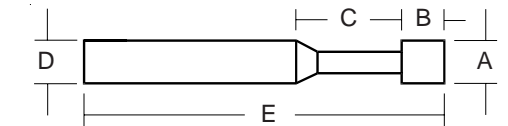


# CYLINDRICAL BONDED PINS

Die Quip's line of bonded grinding pins feature tungsten carbide or hardened steel shanks with diamond abrasive. We offer two different types of bonded pins, resin and copper, to meet your specific finishing needs. The resin bond is a softer and more open bond that is best used for heavier material removal in coarser grits. While the copper bond is specifically designed to replace hand finishing with diamond compound. This hard bond provides a mirror finish when used in grit sizes finer than 800.



R = Resin Bond  
C = Copper Bond

## STANDARD BONDED PINS\*

Description	Part No.	Diamond	A	B	C	D	E	Description	Part No.	Diamond	A	B	C	D	E
DQ 93	95409100	600R(D30)	3/32	3/16	1/4	1/8	2 1/2	DQB 625	95462300	600R(D30)	5/8	3/8	-	3/8	3
	96509100	800C(D20)							96562300	800C(D20)					
	96909100	1600C(D8)							96962300	1600C(D8)					
DQ 93L	95409101	600R(D30)	3/32	1/4	1/4	1/8	2 1/2	DQB 750	95475300	600R(D30)	3/4	3/8	-	3/8	3
	96509101	800C(D20)							96575300	800C(D20)					
	96909101	1600C(D8)						DQB 875	95487300	600R(D30)	7/8	3/8	-	3/8	3
DQ 125	95412100	600R(D30)	1/8	1/8	1/4	1/8	2 1/2		96587300	800C(D20)					
	96512100	800C(D20)						DQB 1000	95400300	600R(D30)	1	3/8	-	3/8	3
	96912100	1600C(D8)							96500300	800C(D20)					
DQ 125L	95412101	600R(D30)	1/8	3/16	1/4	1/8	2 1/2	DQC 625	95462400	600R(D30)	5/8	1/2	-	1/2	4
	96512101	800C(D20)							96562400	800C(D20)					
	96912101	1600C(D8)							96962400	1600C(D8)					
DQ 187	95418100	600R(D30)	3/16	1/4	-	1/8	2 1/2	DQC 750	95475400	600R(D30)	3/4	1/2	-	1/2	4
	96518100	800C(D20)							96575400	800C(D20)					
	96918100	1600C(D8)							96975400	1600C(D8)					
DQA 250	95425200	600R(D30)	1/4	1/4	1/2	1/4	3	DQC 875	95487400	600R(D30)	7/8	1/2	-	1/2	4
	96525200	800C(D20)							96587400	800C(D20)					
	96925200	1600C(D8)						DQC 1000	95400400	600R(D30)	1	1/2	-	1/2	4
DQA 312	95431200	600R(D30)	5/16	1/4	1/2	1/4	3		96500400	800C(D20)					
	96531200	800C(D20)													
	96931200	1600C(D8)													
DQA 500	95450200	600R(D30)	1/2	1/4	-	1/4	3								
	96550200	800C(D20)													
	96950200	1600C(D8)													
DQA 625	95462200	600R(D30)	5/8	3/8	-	1/4	3								
	96562200	800C(D20)													
	96962200	1600C(D8)													
DQB 500	95450300	600R(D30)	1/2	3/8	-	3/8	3								
	96550300	800C(D20)													
	96950300	1600C(D8)													

\* Custom sizes, grits and CBN abrasives are available by request.

**DIE QUIP** CORP.

5360 Enterprise Blvd.  
Bethel Park, PA 15102 USA  
412/833-1662  
412/835-6474 FAX  
[www.DIEQUIP.com](http://www.DIEQUIP.com)  
email - [DIEQUIP@DIEQUIP.com](mailto:DIEQUIP@DIEQUIP.com)